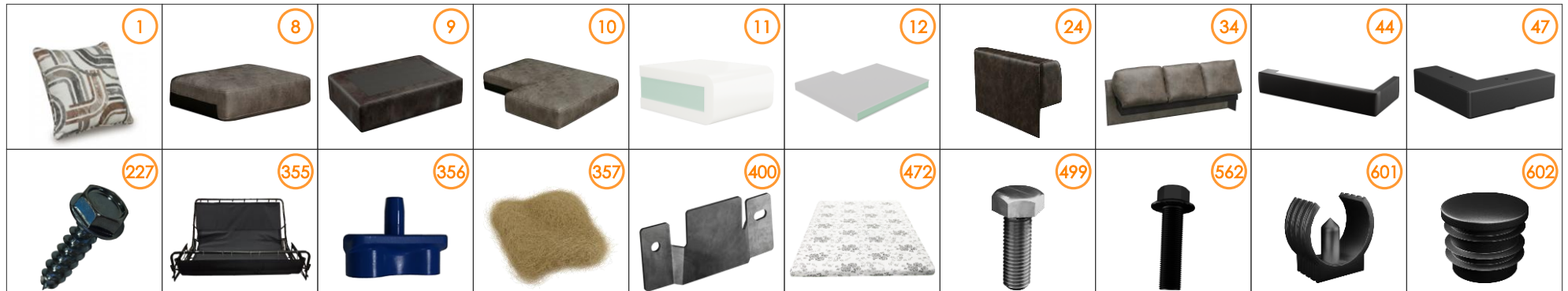
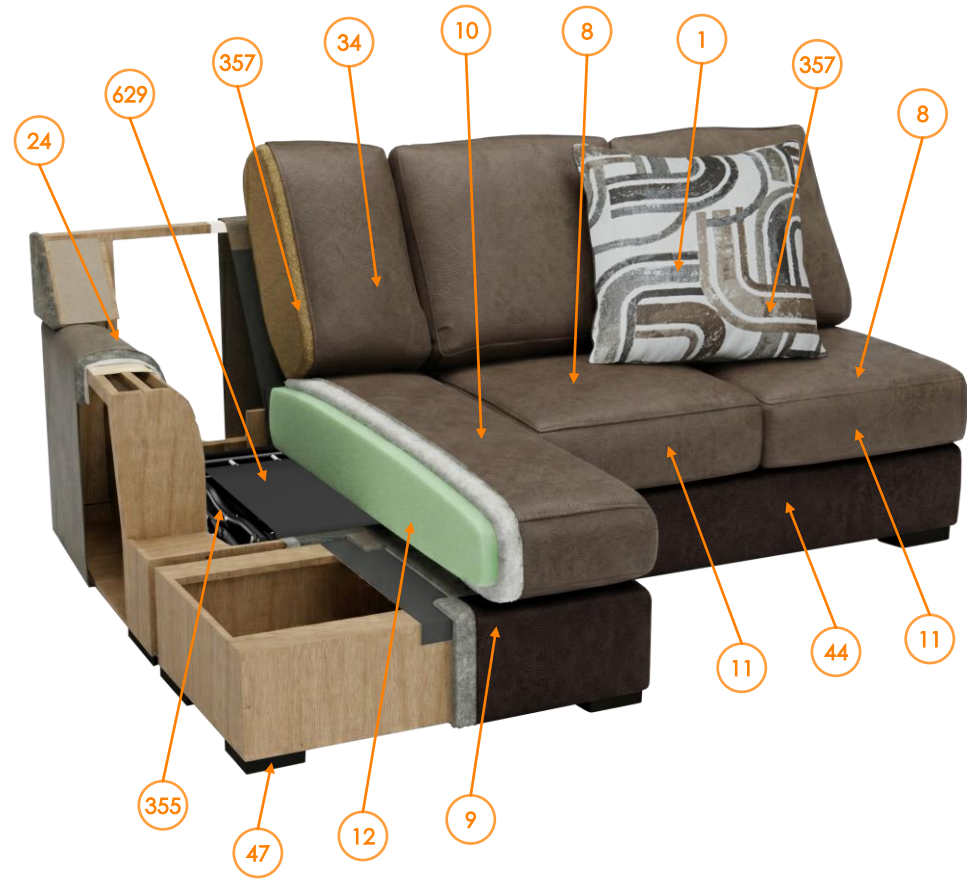


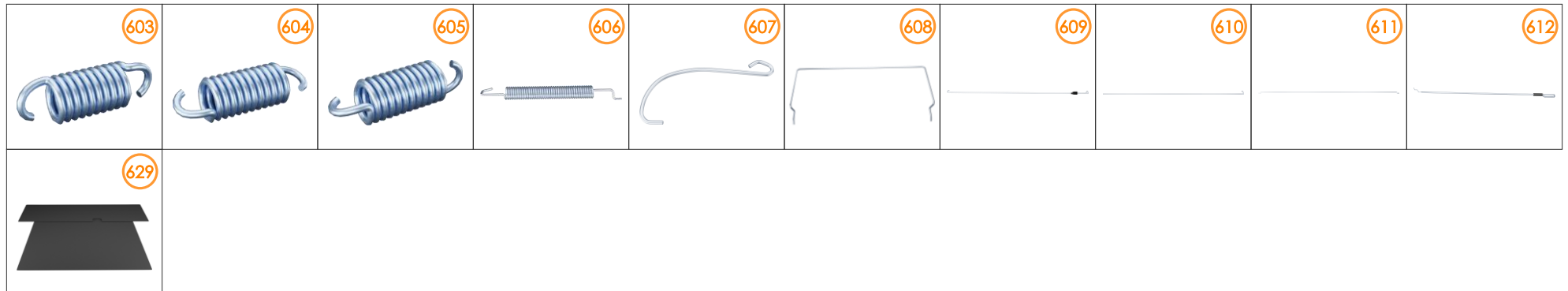
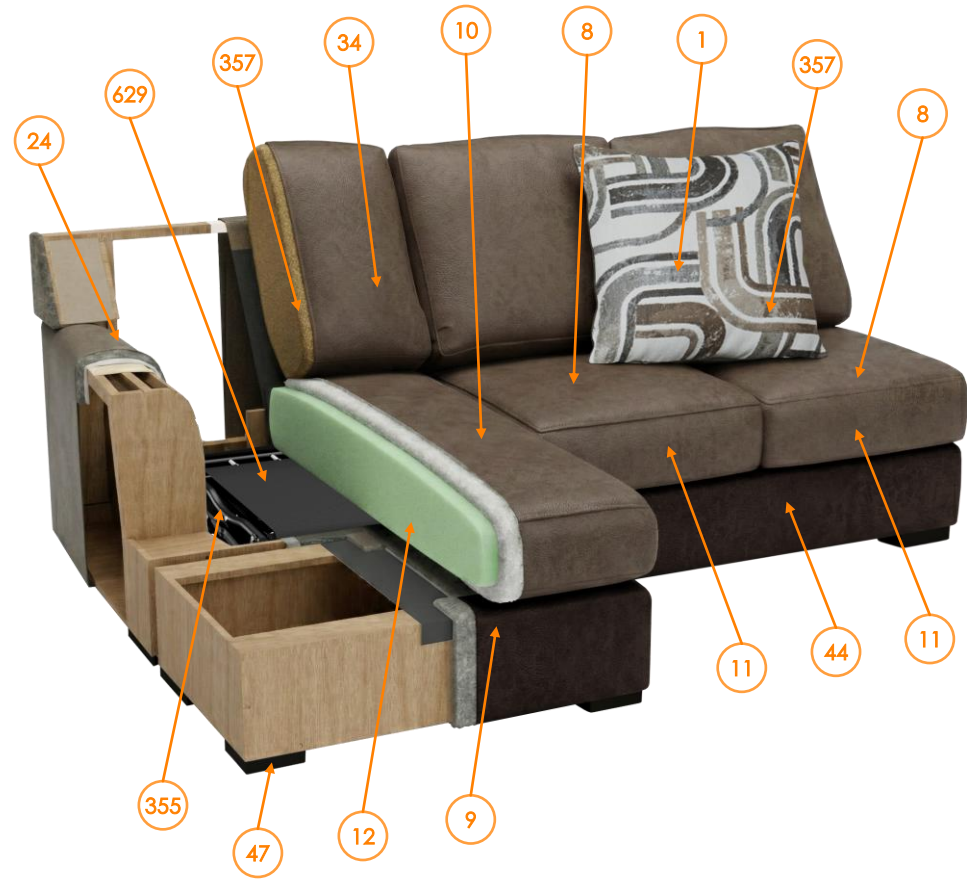
# RP's information 6270369

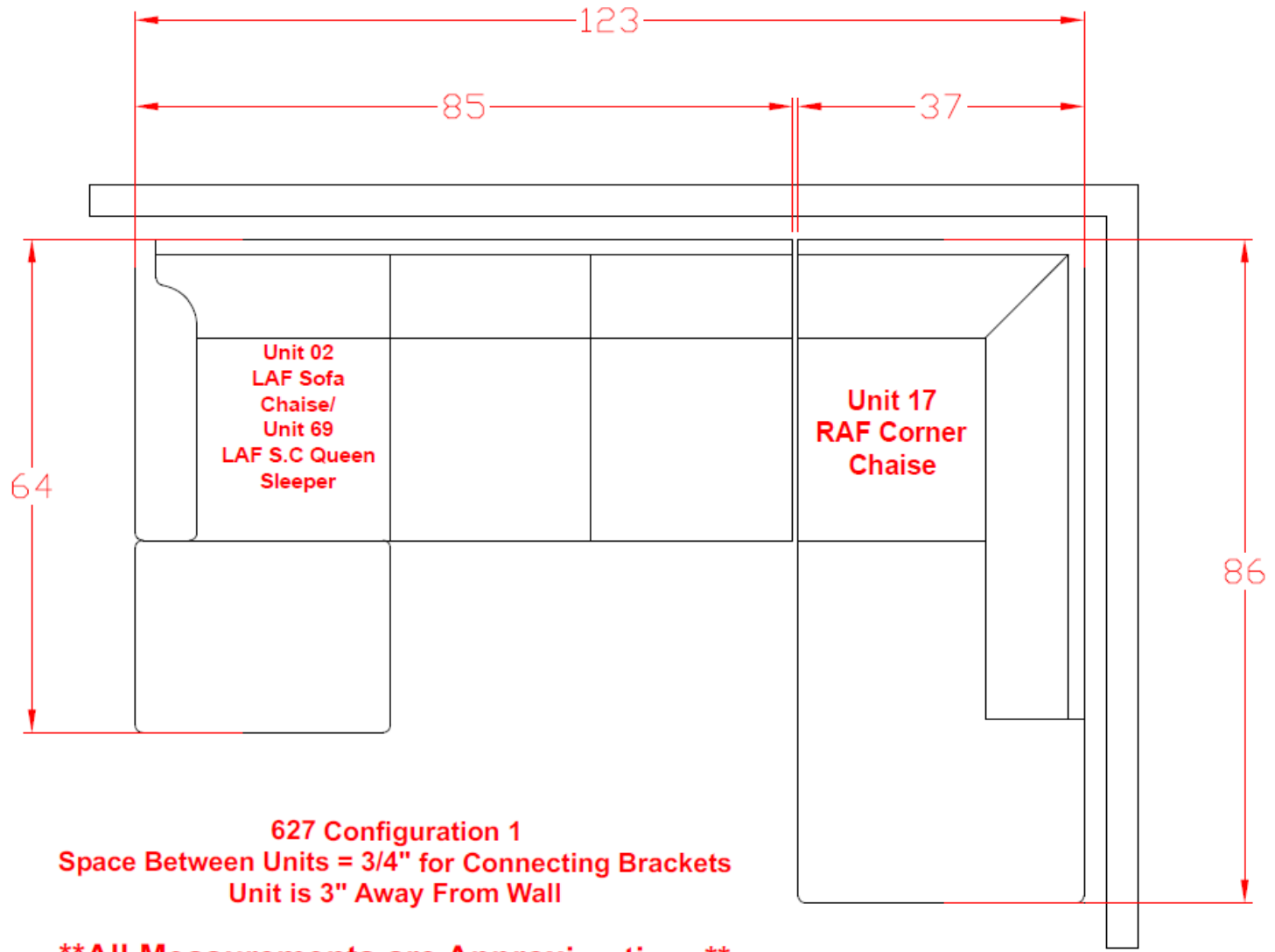
Call out	Part Number	Description	Qty	Material
1	6270302084	TOSS PILLOW SEW KIT	1	Fabric
8	6270302030	CUSHION CASING	2	Fabric
9	6270302033	OTTOMAN CASING	1	Fabric
10	6270302130	LAF CUSHION CASING	1	Fabric
11	420025RP	POLY SEAT CUSHION	2	FOAM, LMF
12	427373RP	POLY CHAISE CUSH	1	FOAM, LMF
24	6270302181	LAF IN/OUT ARM	1	Fabric
34	6270302351	COMPLETE IN/OUT BACK	1	Fabric
44	6270369021	SEAT BAND	1	Fabric
47	32087P1	585 BLK 5 LEG W/NSP	4	Plastic
227	31071RP	IND HX WSHRHD ST #10-12X3/4	6	Metal
355	31468A	QUEEN ASSEMBLED SLEEPER MECH	1	Metal, Fabric
356	77976RP	SPACER 1/2 INCH	2	Plastic
357	30651RP	FIBER RECYCLED BROWN	5	Fiber
400	74843RP	FURNITURE CONNECTOR	1	Metal
472	M11531RP	QUEEN MATTRESS WHITE- GRAY	1	FOAM
499	73507RP	BOLT 1/4-20X3/4 INCH	2	Metal
562	74019RP	HDWE 1/4-20X1.000 CN1420X1	4	Metal
601	32300RP	PLASTIC LEG SUPPORT	1	Plastic
602	32301RP	END CAP	1	Plastic



# RPs' information 6270369

Call out	Part Number	Description	Qty	Material
603	32302RP	TAIL SPRING 2.25IN	1	Metal
604	32303RP	SIDE SPRING 2.5IN	1	Metal
605	32304RP	TAIL WIRE SPRING 2.5IN	1	Metal
606	32305RP	HINGE SPRING 6.5IN	1	Metal
607	32306RP	HOOK AT HEADTILT	1	Metal
608	32307RP	SUPPORT WIRE FOOTREST	1	Metal
609	32308RP	QUEEN 1490 HINGE WIRE	1	Metal
610	32311RP	QUEEN 1582 TARP BTM WIRE	1	Metal
611	32314RP	BS TAIL WIRE HST QN 1460	1	Metal
612	32317RP	BEDSTEAD SIDE WIRE	1	Metal
629	32359RP	QUEEN BED TARP	1	Fabric





**627 Configuration 1**  
Space Between Units = 3/4" for Connecting Brackets  
Unit is 3" Away From Wall

**\*\*All Measurements are Approximations\*\***

